

Drop in with CAMHS

Supported by Elmwood Learning Support Centre

Drop in with **CAMHS*** is free and welcoming event, aimed at parents/carers who have children and teens with Special Educational Needs, Disabilities and or Mental Health Difficulties.

Join us for refreshments and chance to chat with other parents/carers and professional's.

Starting Tuesday 24th September 2019 at 11am - 1pm and every last Tuesday of each month (excluding December 2019) at -

Foxes Hotel, The Esplanade, Minehead, TA24 5QP

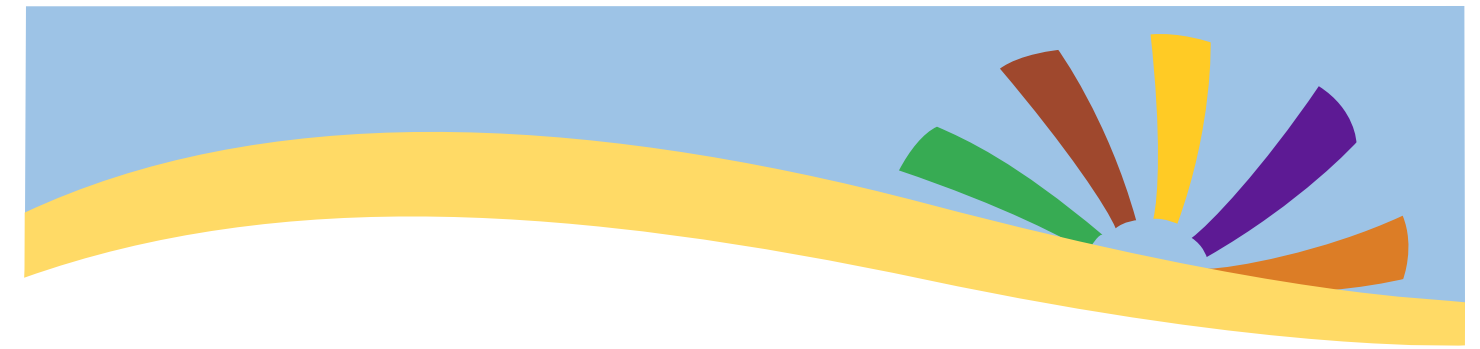
For more information please contact

Janette.baker@sompar.nhs.uk

Tel 0777180499

Jhumphries@educ.somerset.gov.uk

Tel 01278 411211



Drop in with CAMHS

Supported by Elmwood Learning Support Centre

Drop in with **CAMHS*** is free and welcoming event, aimed at parents/carers who have children and teens with Special Educational Needs, Disabilities and or Mental Health Difficulties.

Join us for refreshments and chance to chat with other parents/carers and professional's.

Starting Tuesday 24th September 2019 at 11am - 1pm and every last Tuesday of each month (excluding December 2019) at -

Foxes Hotel, The Esplanade, Minehead, TA24 5QP

For more information please contact

Janette.baker@sompar.nhs.uk

Tel 0777180499

Jhumphries@educ.somerset.gov.uk

Tel 01278 411211